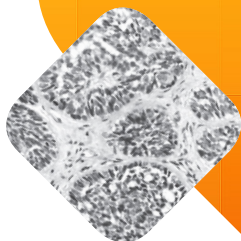




# BASAL CELL CARCINOMA

**PATIENT EDUCATION**



START WITH THE RIGHT **PATH.**

SKIN CANCER is the most common of all cancers, yet it is *the easiest to cure* if diagnosed and treated early.

Basal Cell Carcinoma occurs most often on areas of the body frequently exposed to the sun – the face, ears, neck, scalp, shoulders, and back. Other contributing factors are exposure to or contact with arsenic or radiation, or complications from burns, scars, or tattoos. Basal Cell Carcinoma sometimes resembles psoriasis or eczema. Therefore, a physician should examine your skin regularly and suggest regular time intervals for examination depending upon your risk factors.

---

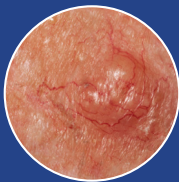
# SPOTTING BASAL CELL CARCINOMA

---

Watch for changes in size, color, texture, and appearance, as well as skin pain, bleeding, itching, or inflammation. Common characteristics of Basal Cell Carcinoma include a bleeding or non-healing sore, a reddish patch, a shiny bump, a pink growth, or a scarred area.

# WHAT IS?

## BASAL CELL CARCINOMA



THE MOST COMMON of all cancers, Basal Cell Carcinoma affects 800,000 Americans each year. One of three cancers in America is a skin cancer, and 75% of skin cancers are Basal Cell Carcinoma. This type of cancer has a 95% cure rate but can cause complications or even death if it is neglected.

### WHO IS MOST AFFECTED?

This slow-growing disease affects individuals who have regular exposure to sunlight. Until recently, this cancer was most common in older people, particularly men who worked outdoors. Now, however, more women and younger individuals are being diagnosed with Basal Cell Carcinoma, especially those who spend leisure time in the sun. People with fair skin, blonde or red hair; or blue, green, or gray eyes have higher than average risk. People with Basal Cell Carcinoma have about a 50% chance of developing another tumor within the next five years.

### HOW IS IT DIAGNOSED?

Your dermatologist or specialist will take a biopsy from the area of the skin with Basal Cell Carcinoma characteristics for the dermatopathologist to examine under a microscope.

### HOW IS TREATMENT DETERMINED?

The dermatopathologist consults with your dermatologist or specialist after reviewing the biopsy results. Together, using their combined experience and knowledge, they determine treatment options most appropriate for your condition.

# WHAT

## TREATMENT OPTIONS ARE AVAILABLE

---

Depending upon the size, depth, and location of Basal Skin Carcinoma, it can be treated by topical medications, curettage and electrodesiccation, surgery, or radiation therapy. It's important to learn as much as you can about your treatment options and to make the decision that's right for you.

- **SURGICAL** approaches include excisional surgery, during which a surgeon removes the tumor along with a margin of normal skin as a safety margin. The pathologist examines the removed tissue to assure all cancer cells are gone.
- **MICROGRAPHY SURGERY** is another surgical approach during which a physician removes the visible tumor and then removes surrounding skin one layer at a time. Each layer is checked under a microscope for signs of cancer until the physician is sure all the cancer is gone. This technique has the highest cure rate and can save the greatest amount of healthy tissue.
- **CRYOSURGERY** is a technique that can be performed without any cutting or anesthesia. Liquid nitrogen is applied to the tumor with a cotton-tipped applicator or spray device. The tumor then becomes dry and crusted and falls off. The procedure is repeated until the cancer is gone. Side effects may include temporary redness, swelling or loss of pigment.



- **LASER SURGERY** is often used for cancers on the lip, face, or scalp because this treatment provides surgeons with greater control over the depth of skin that is removed.
- **PHOTODYNAMIC THERAPY** is best used for cancers on the face and scalp or if individuals have multiple malignancies. A physician applies a topical treatment that is activated by a strong light. The treatment destroys cancer while sparing surrounding tissue.



11025 RCA Center Drive, Suite 300  
Palm Beach Gardens, FL 33410  
T 866.420.5512

[www.AuroraDX.com](http://www.AuroraDX.com)



[14672] SQ PB 0619